



TECHNICAL SPECIFICATIONS

CLASSIC+ PROGRAM BY ENVATECH

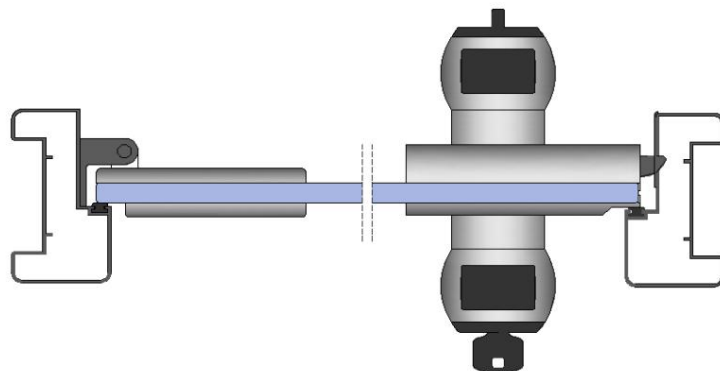
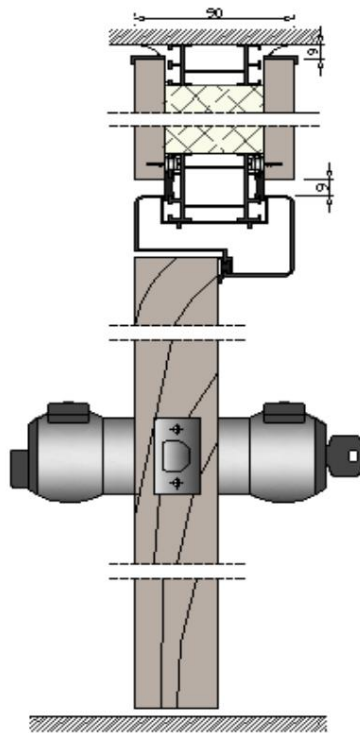
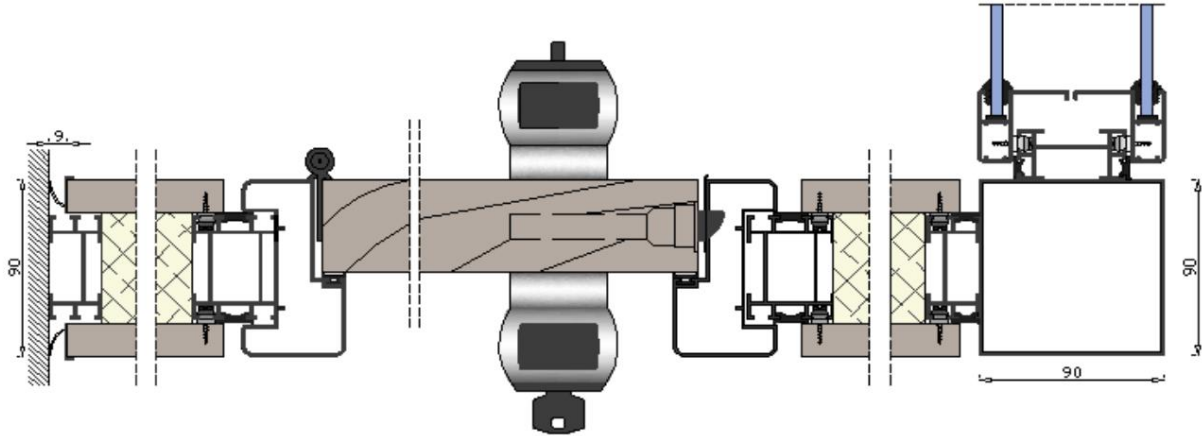
Fecha 03.04.2020

COLOR PANELS	SMOOTH:	02-MLSB	WHITE
		02-MLSG1	LIGHT GRAY
		02-MLSG2	DARK GRAY
		02-MLS01	ALUMINUM
	WOOD:	02-MMAA	MAPLE
		02-MMAH	IS
	TRENDS 2012/2015	¿?	¿?
ALUMINUM COLOR		08-ANPM	SILVER
		08-LA9011M	MATTE BLACK
		08-LA9010M	MATTE WHITE
		08-ANIN*	INOX *
DOOR FRAME	STRAIGHT - 805		
INTERSECTION	9mm		
SCALED PANELS	Edge thickness 0.4mm		
RUBBER COLOR (without aluminum)	Aluminum	Eraser	
	08-ANPM	4 PM	SILVER
	08-LA9011M	04-9011	BLACK
	08-LA9010M	04-9010	SILVER
	08-ANIN*	4 PM	SILVER
LOWER BASE	"U"-449-		
UPPER CORONATION	802 - CORONATION (planimetry > 25mm visible profile 446)		
START-UPS	802 - WALL (including rubber end caps)		
	802 - SCREEN		
90° CORNER	85 x 85 TUBE		
	Special to testa		
3 EXITS	85 x 85 TUBE		
	Special to testa		
PROFILES 1 GLASS	FRAMED		
	A TESTA		
PROFILES 2 GLASS	FRAMED		
	A TESTA		
BLIND DOOR HARDWARE	07-BISTD	FLAT HINGES	
	07-POMEPM	POMO MERONI PLATA	
	07-MNOLPM	TESA OLA SILVER LEVER	
	07-MNTU-U-PM*	SILVER "U" TUBULAR HANDLE *	
	07-MNTU-U-IN*	STAINLESS STEEL "U" TUBULAR HANDLE*	
GLASS DOOR HARDWARE	07-BISTD05	SQUARE HINGES	
	07-POMEPM05	POMO MERONI PLATA	
	07-MNTU-U05*	SILVER "U" TUBULAR LEVER*	
SLIDING DOOR HARDWARE	07-TISTD-U	STAINLESS STEEL "U" TUBULAR HANDLE	
	07-TICCE*	STAINLESS STEEL HANDLE WITH LOCK *	

(*) OPTIONAL (Please inquire about price and delivery time)

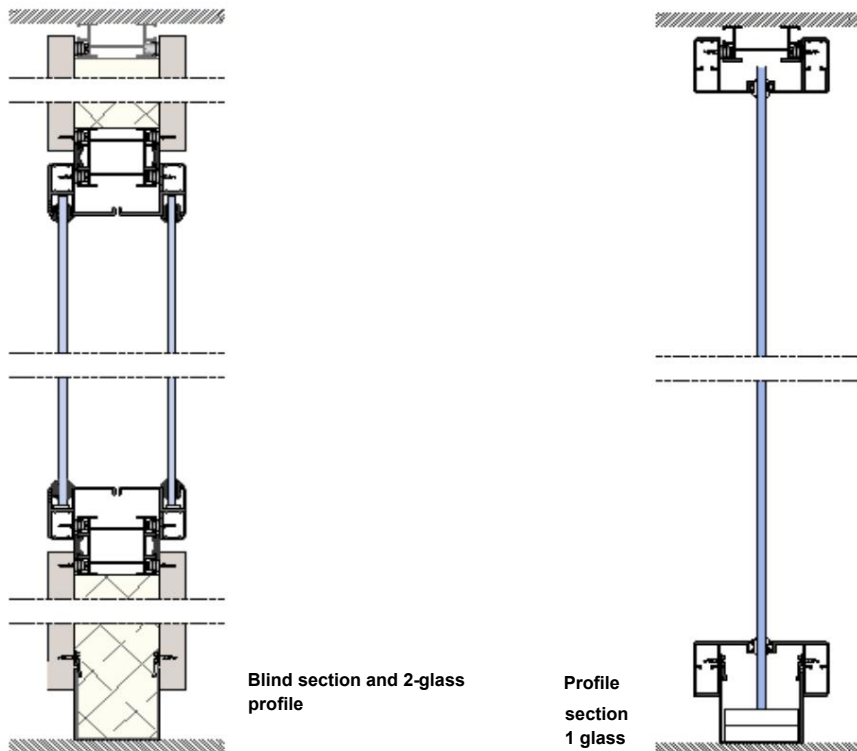
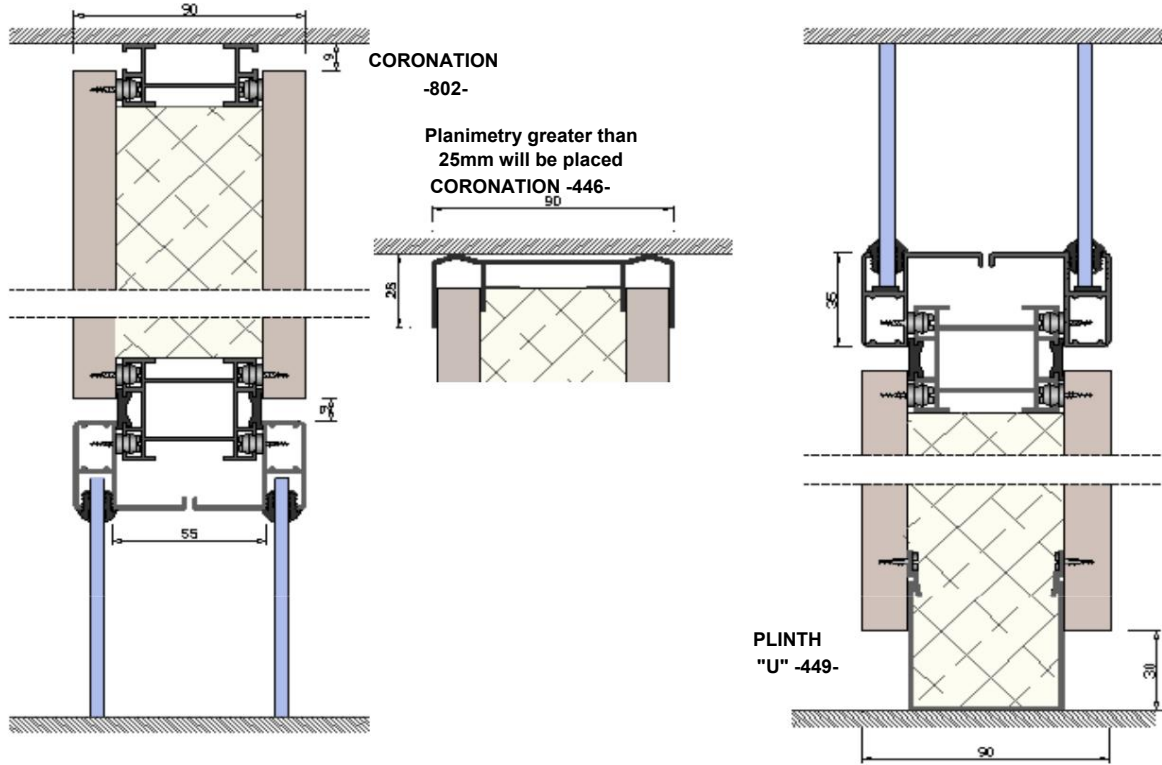
TECHNICAL DETAILS

805 door frame for solid and glass doors



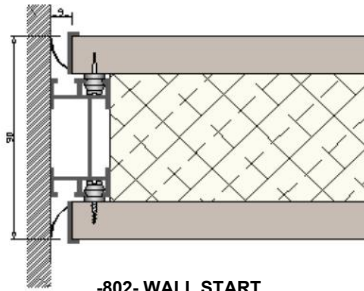
TECHNICAL DETAILS

Vertical sections

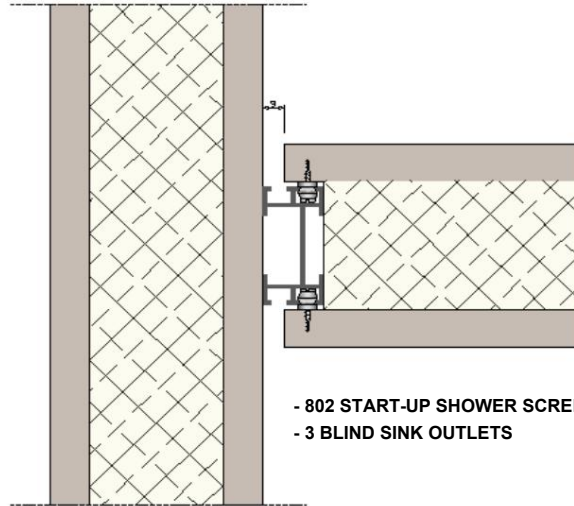


TECHNICAL DETAILS

Horizontal sections

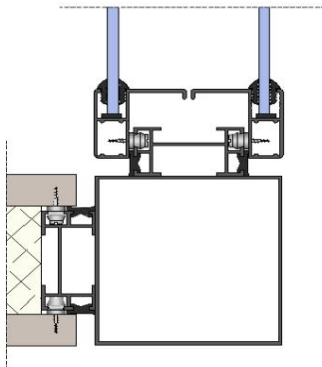


**-802- WALL START
WITH RUBBER**

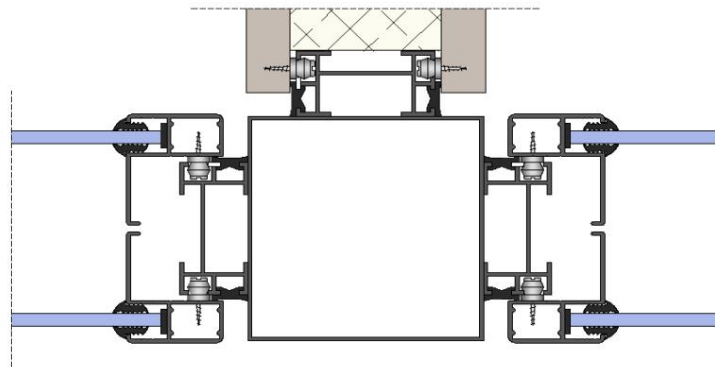


**- 802 START-UP SHOWER SCREEN
- 3 BLIND SINK OUTLETS**

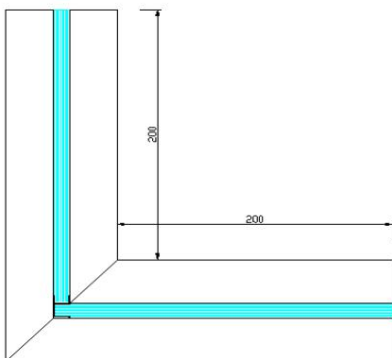
Sections set



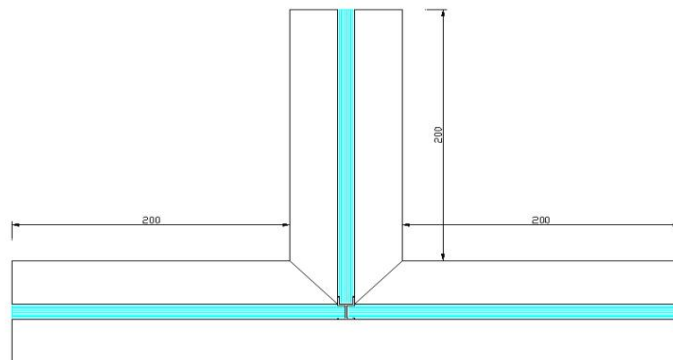
90° corner piece (85x85 tube)



3 Outlets (85x85 tube)



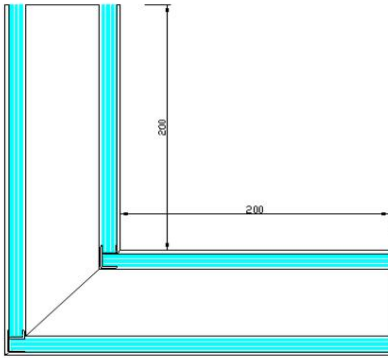
90° corner piece (special end piece)
measuring 200x200
1 glass partition



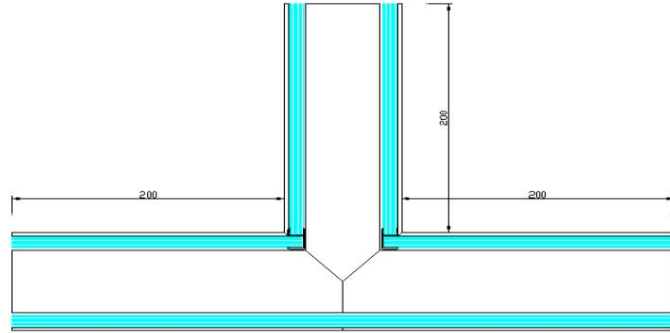
3 Exits (special to head)
dimensions 490x200
glass partition

TECHNICAL DETAILS

Horizontal sections



90° corner (special end fitting)
dimensions of 200x200
2-pane glass shower screen



3 Exits (special to head)
dimensions 490x200
2-pane glass shower screen

STANDARD PROGRAM

BLIND DOOR

POMO MERONI PLATA



TESA LEVER
SILVER WAVE



GLASS DOOR

POMO MERONI
SILVER



OPTIONAL PROGRAM*

BLIND DOOR

TUBULAR HANDLE
"U" SILVER

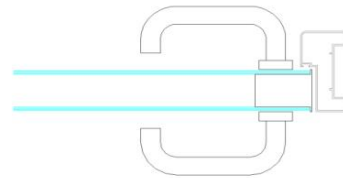


GLASS DOOR

TUBULAR "U" HANDLE
SILVER



DOUBLE GLAZED DOOR PROGRAM / ALUMINUM PROFILE PANEL ***



HARDWARE:

Stainless steel three-leaf hinges
Tubular handle "U" INOX finish

Framed glass door program ***



HARDWARE:

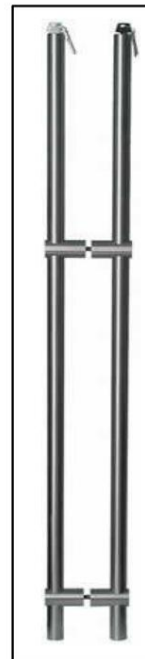
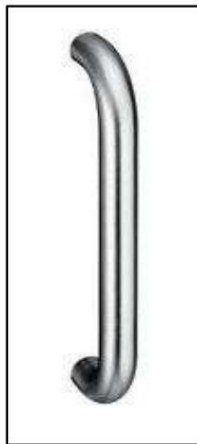
Silver hinges
SILVER tubular "U" Compact handle
Silver Adapter

(***) Special door leaves. Please inquire about price and delivery time.

SLIDING DOOR PROGRAM

STAINLESS STEEL HANDLE WITH OPTIONAL LOCK*

"U" STAINLESS STEEL TUBULAR HANDLE



(*) OPTIONAL (Please inquire about price and delivery time)

BLIND MODULES

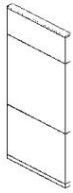


EC01+

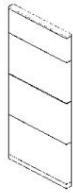


EC02+

1000mm (width) module



EC03+



EC04+

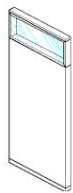


EC05+

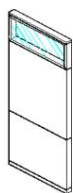
Modular width of 1000 and/or 2000mm

MODULES WITH DOUBLE GLAZING

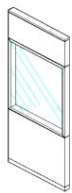
Modular 1000mm wide with blind end caps



ED01+



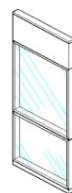
ED02+



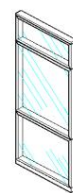
ED03+



ED04+



ED05+



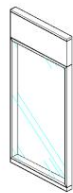
ED06+



ED07+



ED08+



ED09+



ED10+

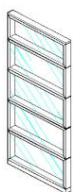


ED11+

Modular widths of 1000 and/or 2000mm with blind end caps



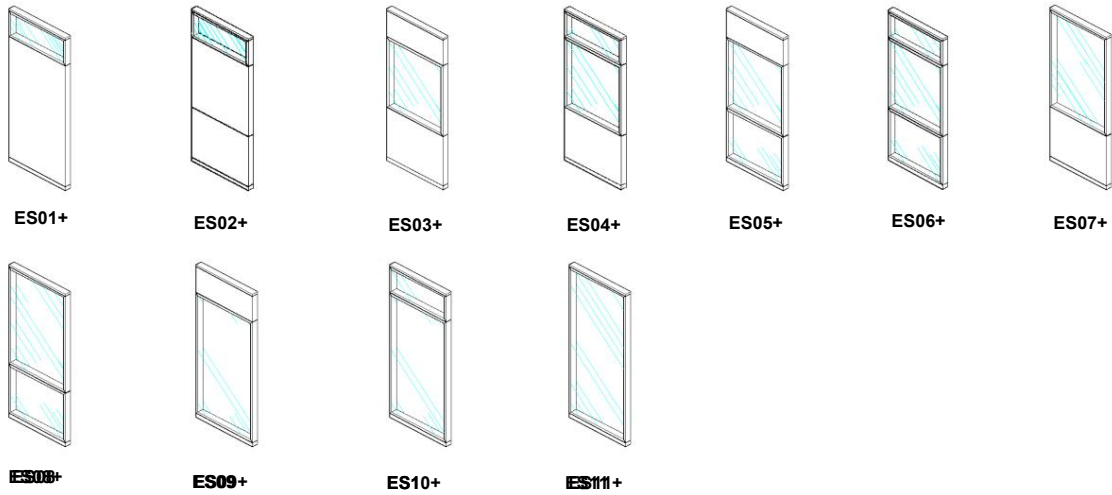
ED12+



ED13+

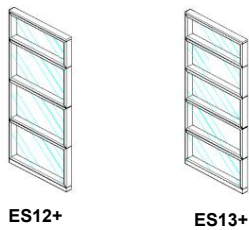
MODULES WITH A FRAMED GLASS

Modular 1000mm wide with blind end caps



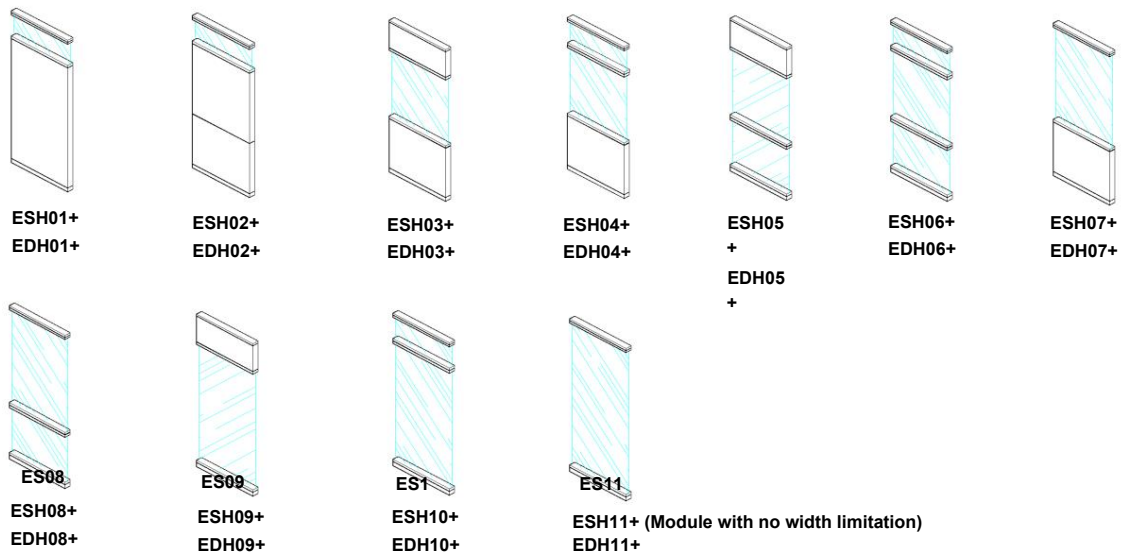
Modular widths of 1000 and/or 2000mm with blind end caps

Modular paneling without end caps with a maximum width of 2000mm** (please inquire about prices)



MODULES WITH ONE AND TWO END-MOUNTED GLASS

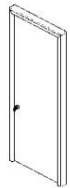
Modulation according to attached sketches



SINGLE-LEAF DOOR



EP901+



EP902+
h.max.2500



EP903+



EPD904+



EPS904+



EP905+



EPD906+



EPS906+



EP907+
h.max.2750



EP908+



EP909+

SINGLE LEAF DOOR + FIXED BLIND PANEL (1200)



EP1201+



EPD1202+



EPS1202+



EPD1203+



EPS1203+



EPD1204+



EPS1204+



EP1205+



EPD1206+



EPS1206+



EPD1207+



EPS1207+



EPD1208+

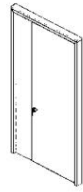


EPS1208+

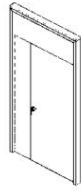
DOUBLE DOOR (1200)



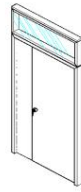
EP1209+



EP1210+
h.max.2500



EP1211+



EPS1212+



EPD1212+



EP1213+



EPD1214+



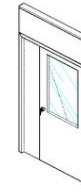
EPS1214+



EP1215+
h.max.2750mm



EP1216+



EP1217+

DOUBLE DOOR (1700)



EP1701+



EP1702+
h.max.2500mm



EP1703+



EPD1704+



EPS1704+



EP1705+



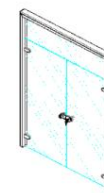
EPD1706+



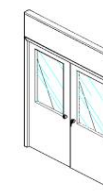
EPS1706+



EP1707+
h.max.2750mm



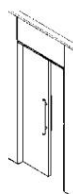
EPD1708+



EPS1709+

(*)NOTE: For the *EP908+*, *EP1216+* and *EP1708+* door models, the maximum installation height is 2750mm. For higher heights, a security door is required. Please inquire about pricing.

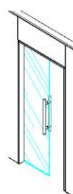
SINGLE LEAF SLIDING DOOR



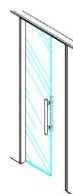
EPC901+



EPC902+
h.max. 2500mm



EPC905+

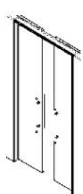


EPC907+
h.max.2750mm

TWO-LEAF SLIDING DOOR (1200)



EPC1201+



EPC1202+
h.max2500mm

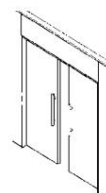


EPC1205+

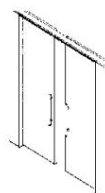


EPC1207+
h.max.2750mm

TWO-LEAF SLIDING DOOR (1700)



EPC1701+



EPC1702+
h.max.2500mm



EPC1705+

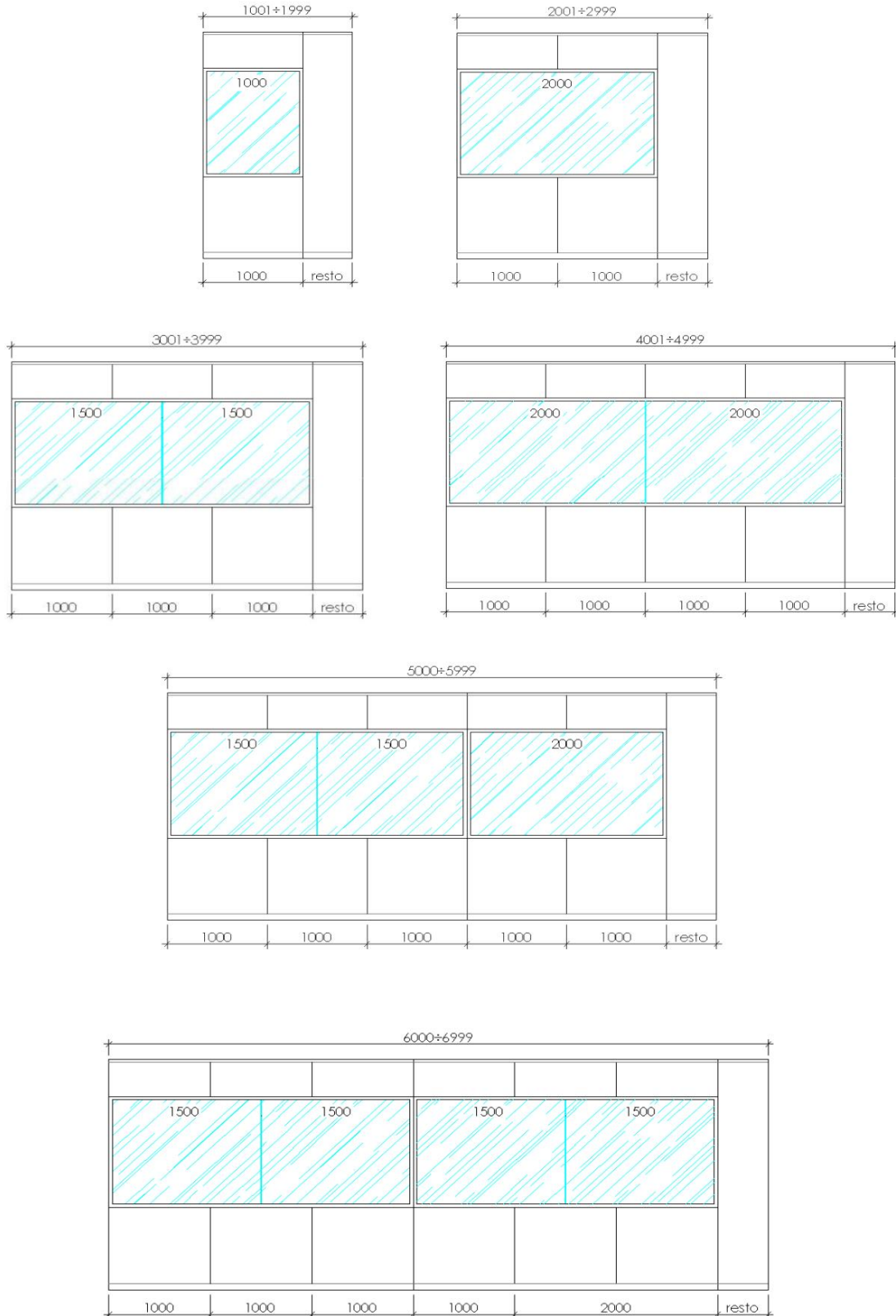


EPC1707+
h.max.2750mm

MODULATION WITH A THICK-END GLASS WITH FINAL FINISH

Modulation valid for modules: ESH01 - ESH02 - ESH03 - ESH04 - ESH05 and ESH06

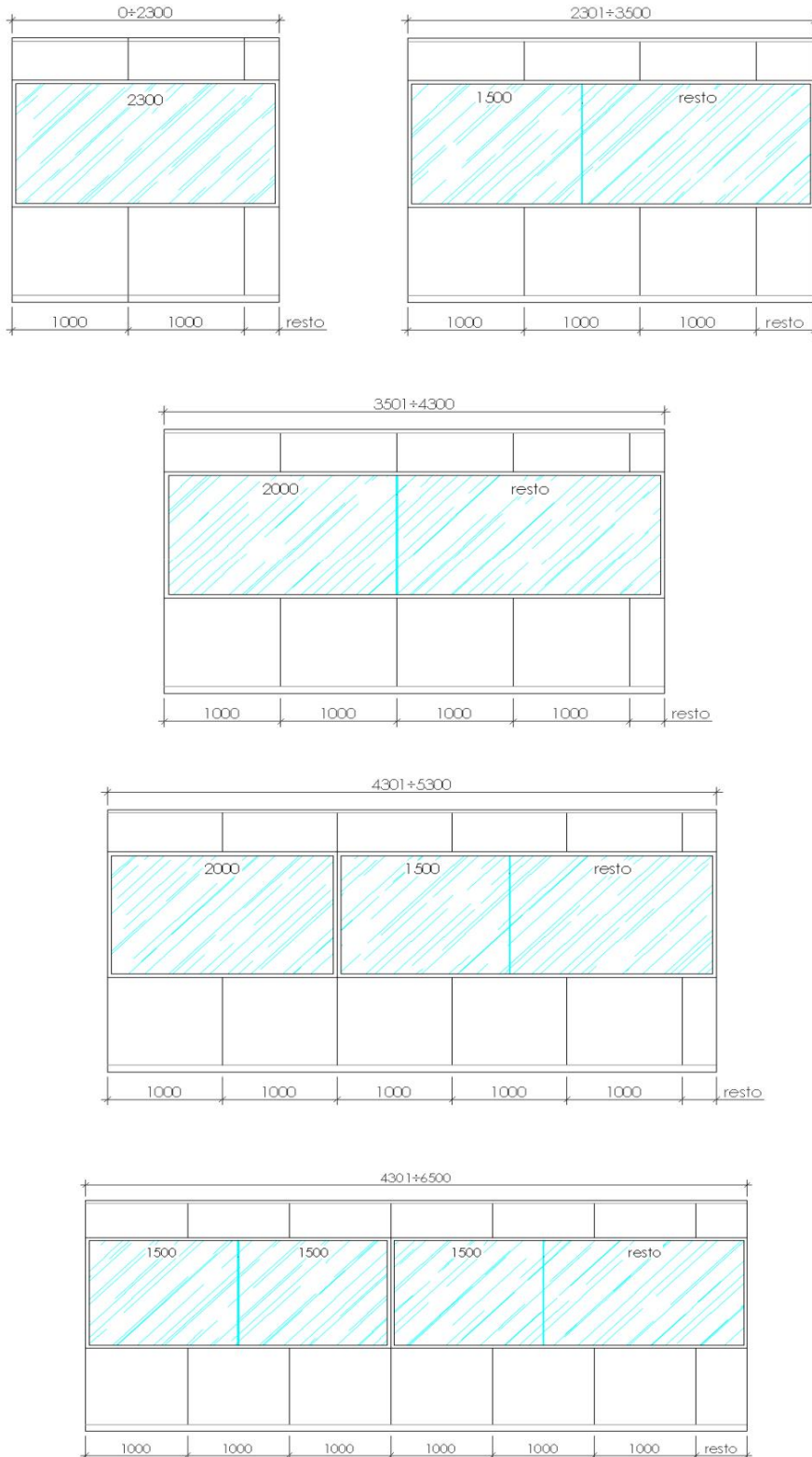
EDH01 - EDH02 - EDH03 - EDH04 - EDH05 and EDH06



MODULATION WITH AN END-FACE CRYSTAL WITHOUT A FINISHED FINISH **

Modulation valid for modules: ESH01 - ESH02 - ESH03 - ESH04 - ESH05 and ESH06

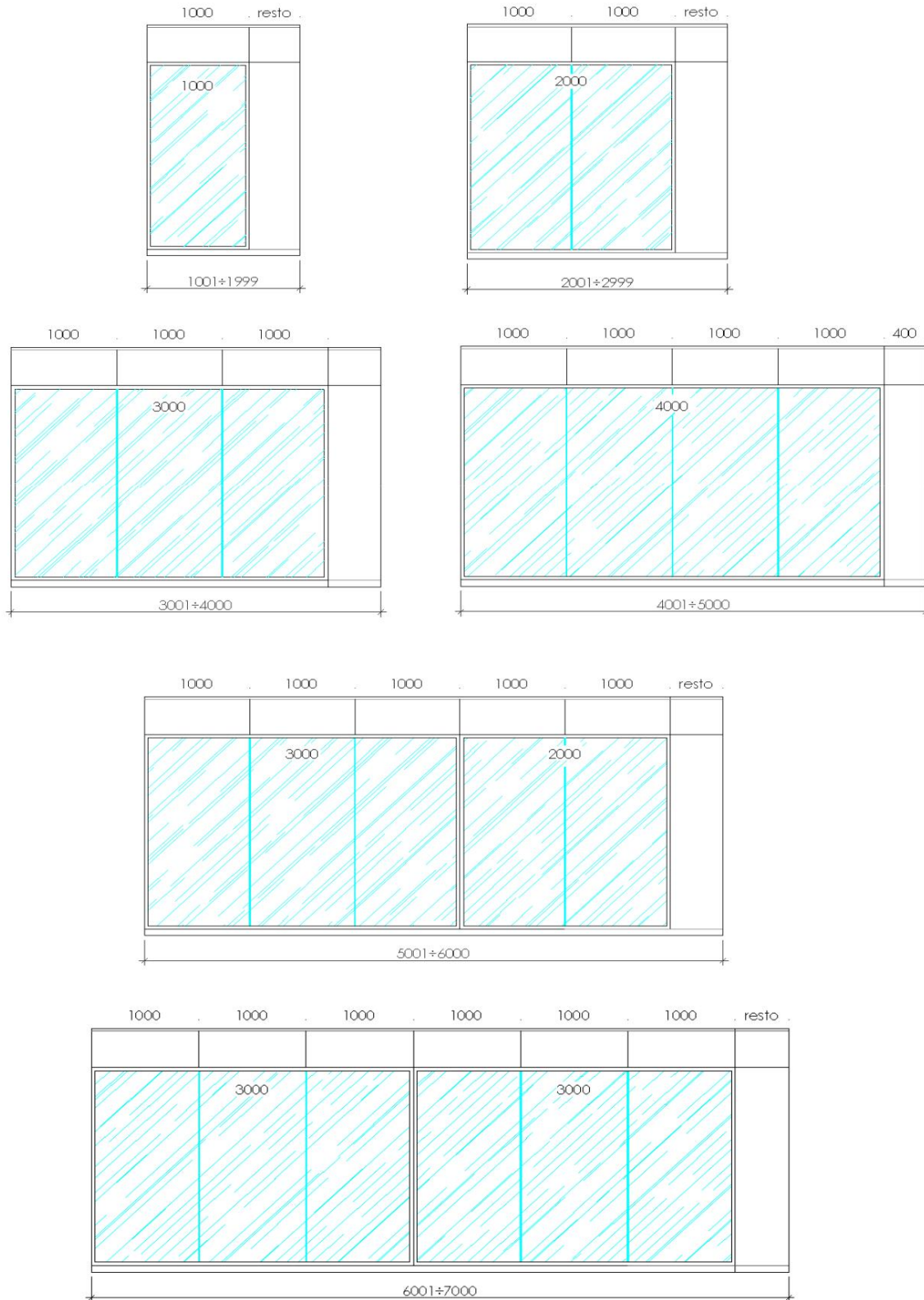
EDH01 - EDH02 - EDH03 - EDH04 - EDH05 and EDH06



() without final sale (Price upon request)**

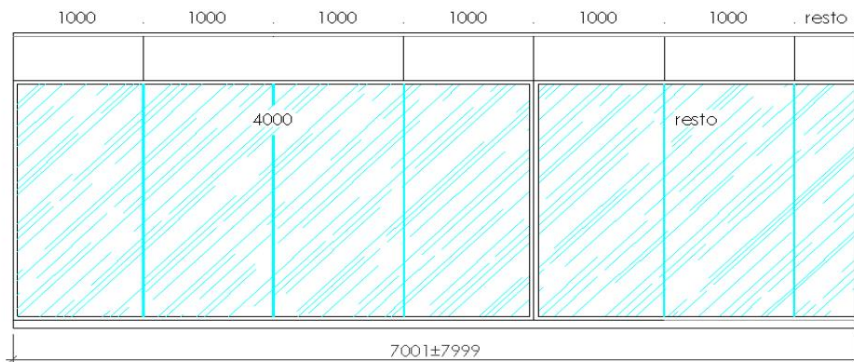
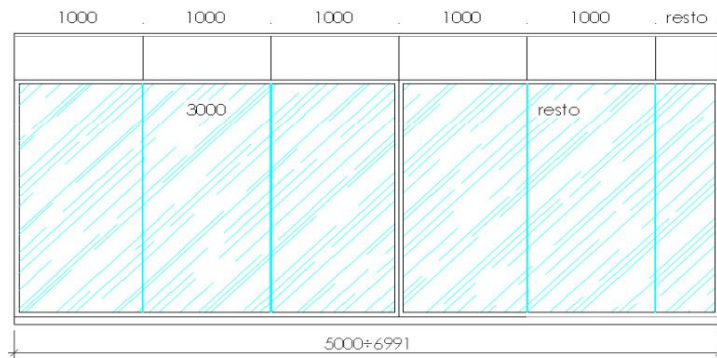
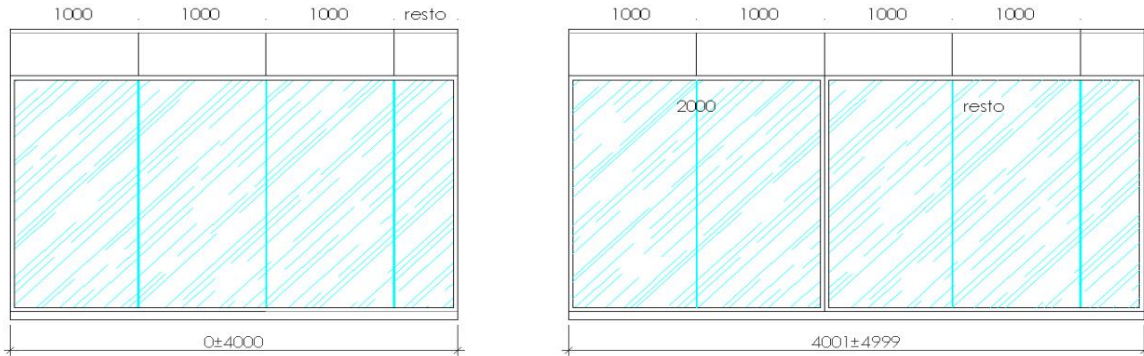
MODULATION WITH A THICK-END GLASS WITH FINAL FINISH

Modulation valid for modules: ESH07 - ESH08 - ESH09 - ESH10
EDH07 - EDH08 - EDH09 - EDH10



MODULATION WITH AN END-FACE CRYSTAL WITHOUT A FINAL FINISH**

Modulation valid for modules: ESH07 - ESH08 - ESH09 - ESH10
EDH07 - EDH08 - EDH09 - EDH10



() without final sale (Price upon request)**

For projects with a height exceeding 3000mm, please inquire about pricing.

Signed: PRODUCTION	Commercial Signature	Signed: TECHNICAL OFFICE
DATE	DATE	DATE